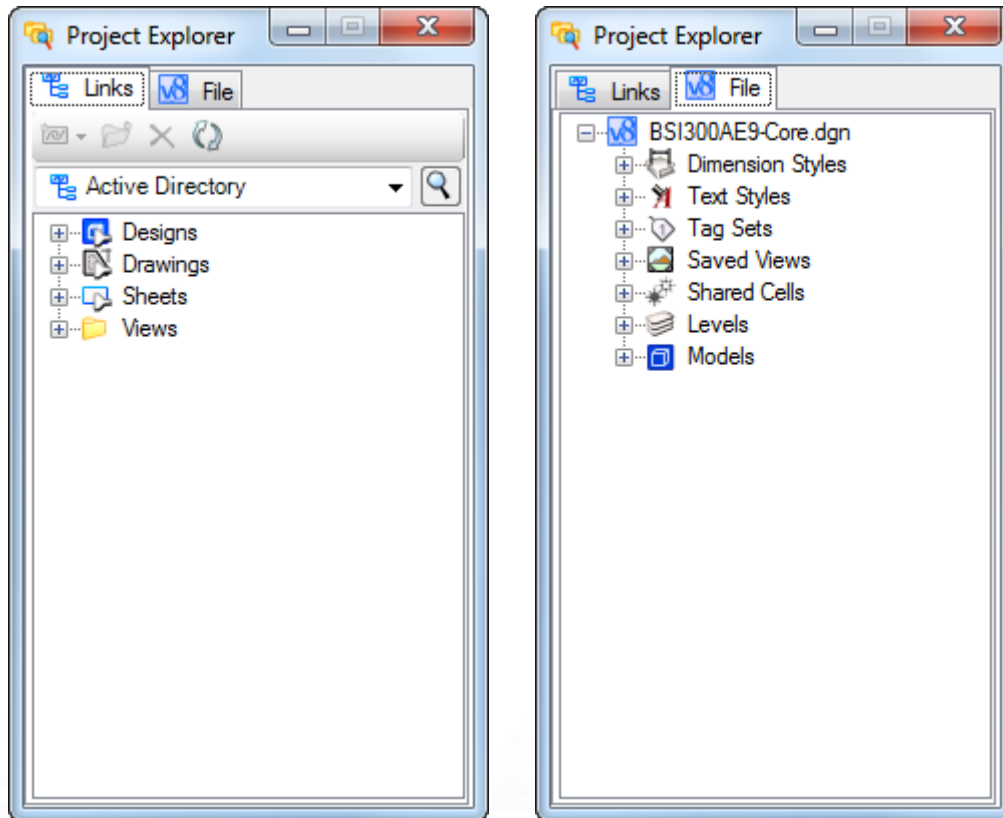


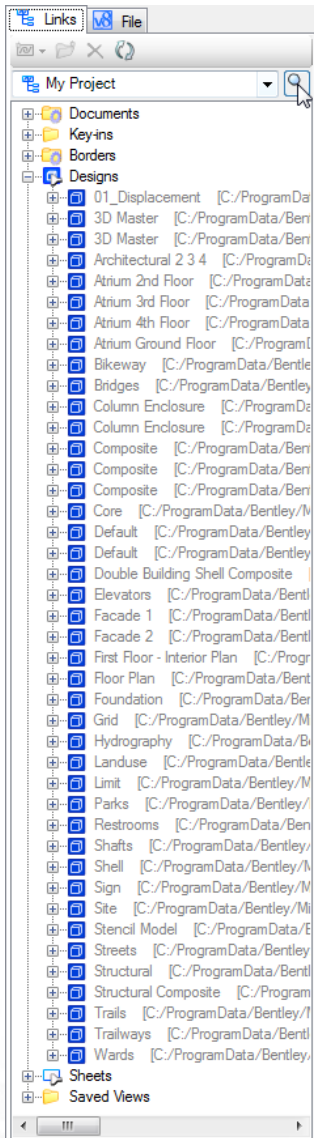


# Project Explorer

Efficiently Managing Project Information with MicroStation, PowerProducts and applications. For experienced MicroStation users, this session will help you understand how to configure Project Explorer, browse file content and index your DGNs for quick discovery of data and related information

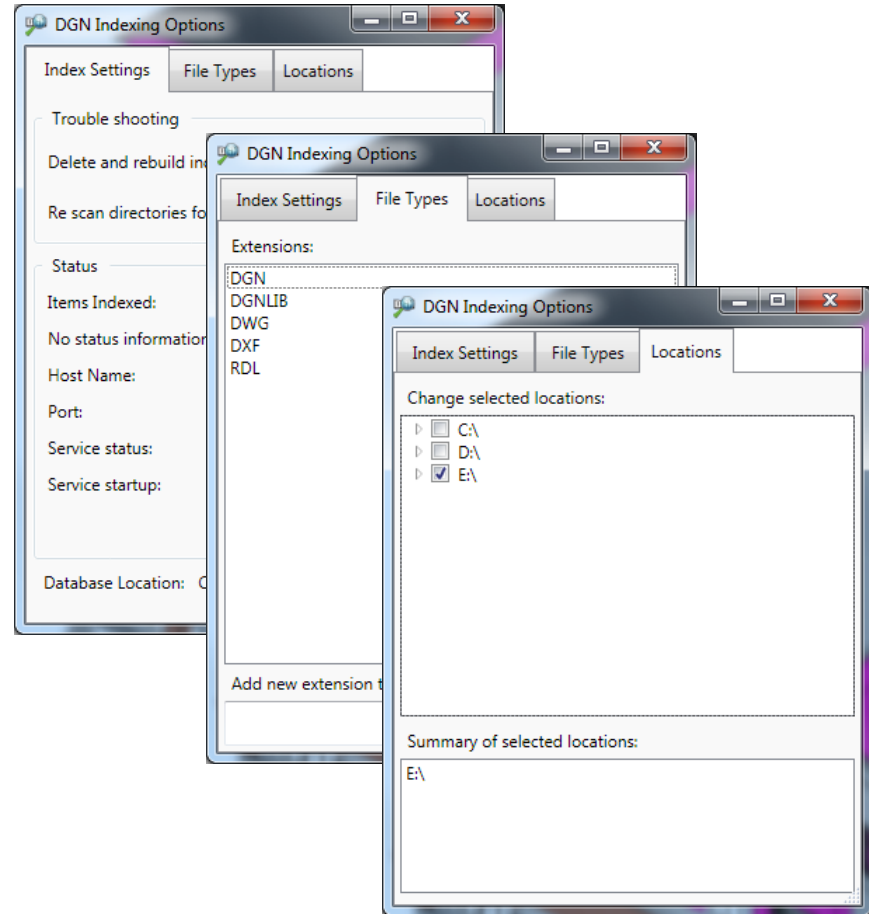
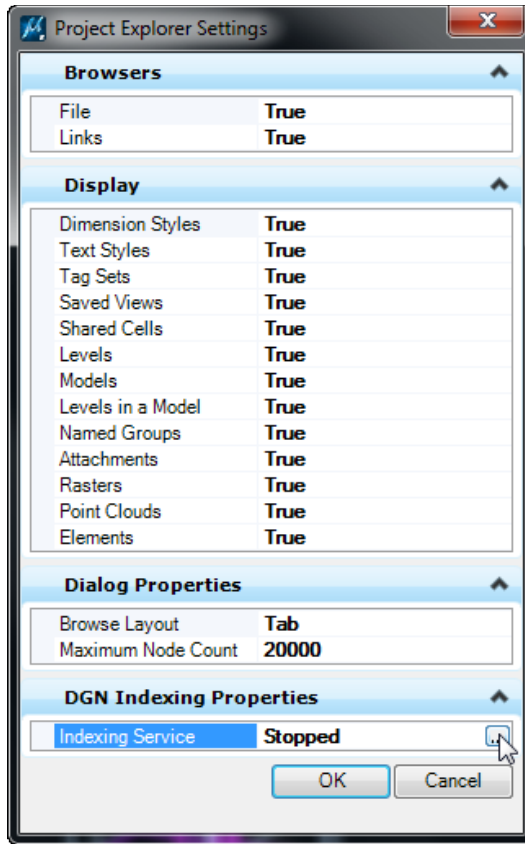
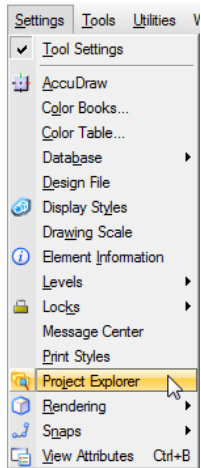


# Project Explorer, overview



Project Explorer is a tool for insulating users from worrying about the location of files, models, or supporting documents. When project data is organized using Project Explorer, it does not matter to users where files, models, or supporting documents are actually located.

# PE Settings, DGN Indexing Options



Settings>Project Explorer>Project Explorer Settings>Indexing Service

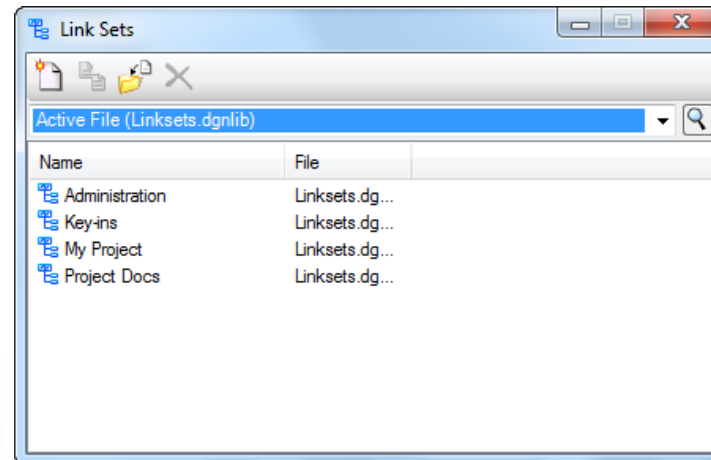
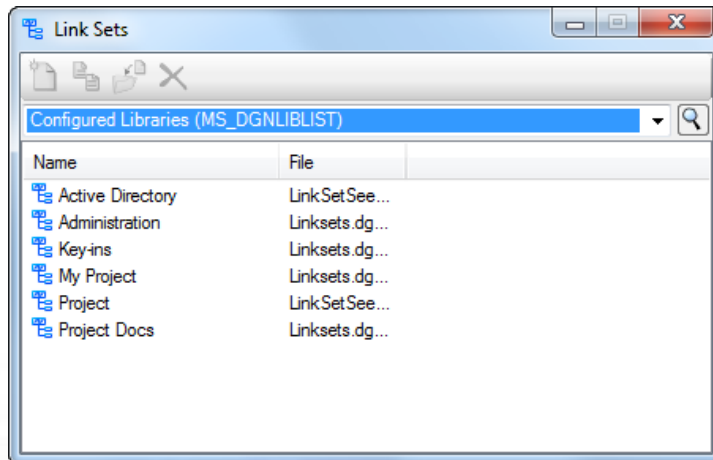
# Link Sets

Links to a project's data are stored in a link set.

If link sets exist in the open DGN file or in the configured DGN libraries, a link set appears in the Project Explorer dialog when you open it.

The default link set is the one that you were viewing most recently. If you have switched to a different DGN library, the first link set in that DGN library appears. The active link set's name appears in the drop-down list box and its links appear below its name.

The links may be in folders, which you open and close by clicking the plus and minus signs to the left of the folders.



# Link Sets

Link sets come from one of three sources:

**Configured Libraries:** The links sets in all of the files specified by the **MS\_DGNLIBLIST** configuration variable. If Configured Libraries is the source of your link set, you will be unable to modify the link set at this point. You will not be able to create or delete folders or links. To modify a link set from the Configured Libraries, you must open the file containing the link set. The name of the file in which the link set is stored appears in the File column in the list box.

**Active File:** Displays the link sets stored in the open DGN file. If this is the source of your link set, you will be able to modify the link set, but you will be unable to use the Undo button to reverse any changes you make.

**Selected File:** Lets you select a particular DGN file and displays the link sets contained in that DGN file. Click the Browse icon to choose a file. If this is the source of your link set, you will be able to modify the link set, but you will be unable to use the Undo button to reverse any changes you make.

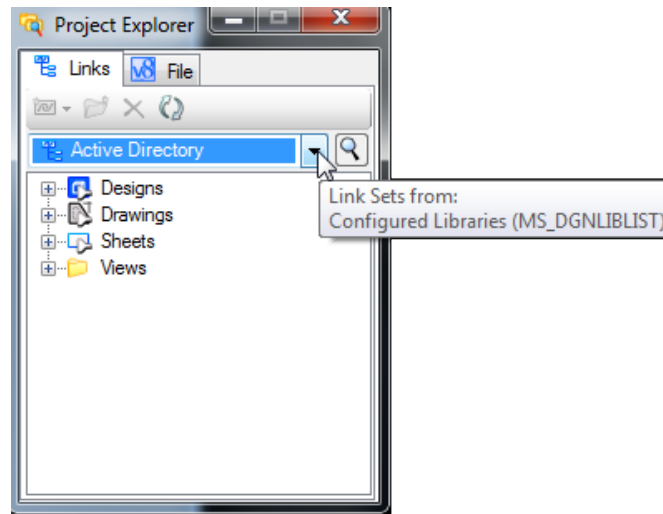
The recommended way to access your link sets is through your configured libraries. If you select Configured Libraries, you will be able to choose from all link sets stored in the location to which the **MS\_DGNLIBLIST** configuration variable points. Link sets stored here are available to all users whose configuration variable points to this location.

# Link Sets, Active Directory

The Active Directory link set, which resides in `ustation.dgnlib`, contains configuration variable links to each of the following types of resources:

Design models, Drawing Models, Sheet models, Plan views, Elevation views, Section views, and Detail views.

Do not modify the Active Directory link set, but consider copying it to create the link set for a new project.





# Link Types

---

Link sets can contain the following types of links.

**File** — link to either a file or, for some file types, instances of types of data within the file. For example, you can create links to models and saved views within DGN files.

**Folder** — to a physical folder containing DGN, DWG, and other files.

**Key-in** — to a key-in command. This would allow you to execute that key-in command by attaching it an element or by right clicking on it and selecting Open.

**URL** — to a Uniform Resource Locator, such as the address of a Web page.

**LinkSet** — a link to another link set in the same workspace by selecting LinkSet Link from the Create Link options.

**Configuration Variable** — a Project Explorer folder containing links to resources pointed to by a configuration variable.





# Link Types

---

## Folder links

Folders can be dragged from Windows Explorer and dropped in the Project Explorer dialog or created via the PROJECT CREATE LINK FOLDER [folder-path] key-in. Multiple folder paths can be specified via this key-in.

If you create a link to a folder, in the Project Explorer dialog, you will see the name of the folder in black, indicating you can copy or delete the folder and all the files and sub-folders within the folders. The files and sub-folders under the folder cannot be moved or deleted independently.

Right click the linked folder in Project Explorer and select Open from the pop-up menu to open Windows Explorer at the location of the linked folder.



# Opening links

---

Following a link to a data resource in the active link set in the Project Explorer dialog is called opening the link. There are some prerequisites for opening links:

You must have access to the location in which the file or target is stored.

You must have installed on your computer an application that is capable of opening and displaying the file.



Jonas Wahlberg, Application Engineer Building  
[jonas.wahlberg@bentley.com](mailto:jonas.wahlberg@bentley.com)

**DEMO**



Jonas Wahlberg, Application Engineer Building  
[jonas.wahlberg@bentley.com](mailto:jonas.wahlberg@bentley.com)

Q&A?

